

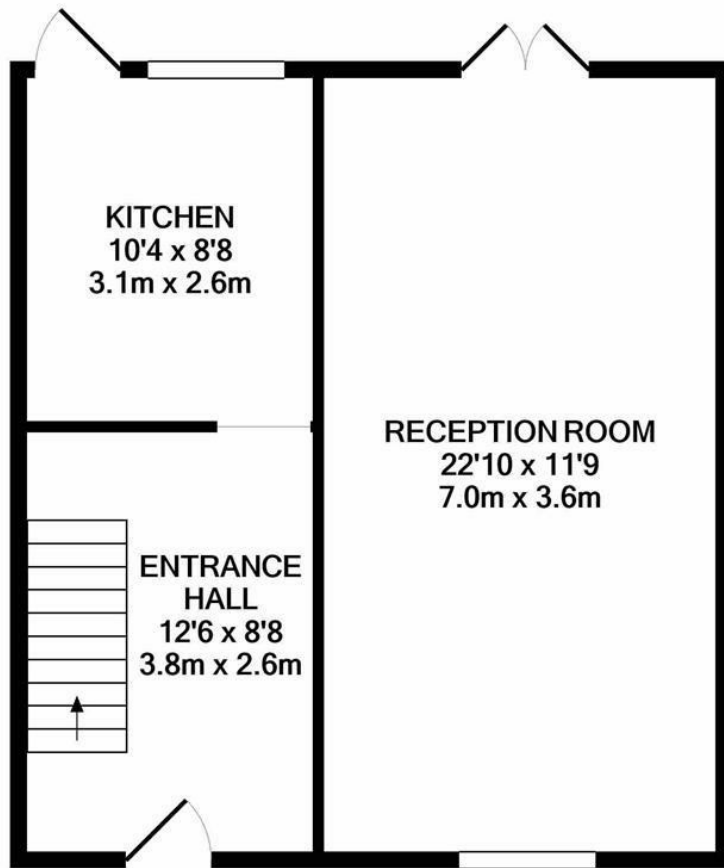




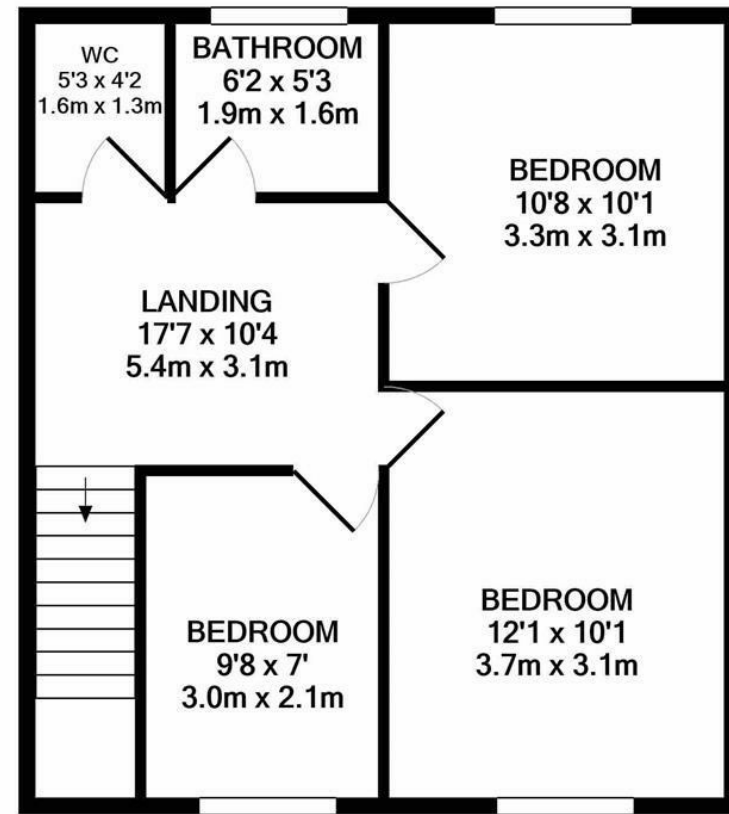
Higgins Road, Cheshunt, Waltham Cross, EN7 6XR

Westwood Leber are delighted to bring to the market this well presented and rarely available four double bedroom detached family home located on this popular residential road in West Cheshunt. The property offers spacious living accommodation throughout including a ground floor w/c, separate dining room, open plan kitchen/ breakfast room, a sperate lounge, utility room and a separate office. Further benefits include four large bedrooms, large family bathroom, en-suite to master, a well landscaped rear garden, an integral garage and front drive way. Internal viewing is highly recommended!





APPROX. FLOOR
AREA 465 SQ.FT.
(43.2 SQ.M.)



1ST FLOOR
APPROX. FLOOR
AREA 465 SQ.FT.
(43.2 SQ.M.)

TOTAL APPROX. FLOOR AREA 929 SQ.FT. (86.3 SQ.M.)

Whilst every attempt has been made to ensure the accuracy of the floor plan contained here, measurements of doors, windows, rooms and any other items are approximate and no responsibility is taken for any error, omission, or mis-statement. This plan is for illustrative purposes only and should be used as such by any prospective purchaser. The services, systems and appliances shown have not been tested and no guarantee as to their operability or efficiency can be given
Made with Metropix ©2020









